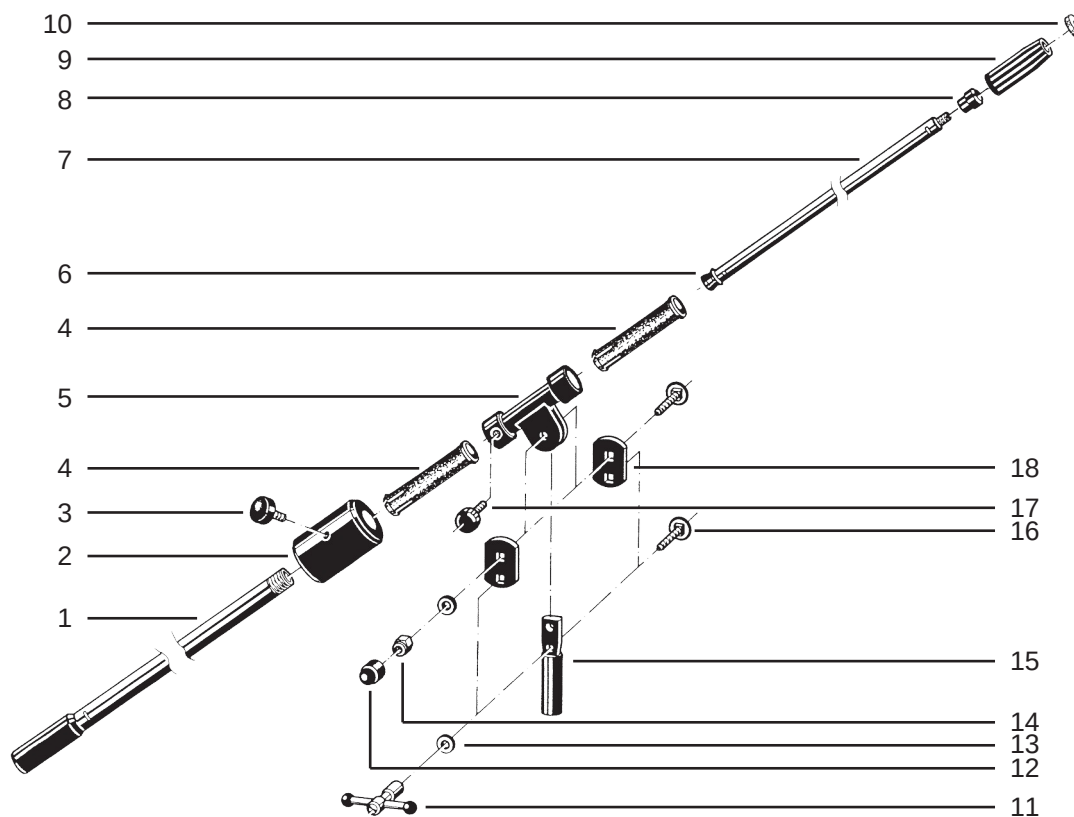


212 c Boom Arm

21231.400.55 black



pos	description	art.-no.	qty
1	main rod	7.212.300101	1
2	counter weight	01.03.970.55	1
3	locking knob M8 x 25 mm	01.81.335.55	1
4	alignment bushing	01.86.300.55	2
5	swivel joint assembly complete	5.21230.6.55	1
6	plastic end stop	01.85.070.55	1
7	extension rod with thread	7.212.330255	1
8	plastic ring	01.86.820.55	1
9	plastic tightening sleeve	01.86.925.55	1
10	aluminum threaded washer	03.31.550.15	1
11	locking nut complete	6.30350.1.55	1
12	plastic bolt cap	03.20.415.55	1
13	washer	01.41.020.01	2
14	locking nut M8	03.08.440.29	1
15	connecting joint 1/2"	01.06.605.55	1
16	carriage bolt M8 x 45 mm	03.07.555.25	2
17	knurled knob M6 x 11 mm	01.82.826.55	1
18	connecting plate	01.37.870.55	2