

**ICM Corporation is the global manufacturer of our patented 360° radial compression technology in both connectors and tools.**

➤ **Our F-Conn connectors feature:**

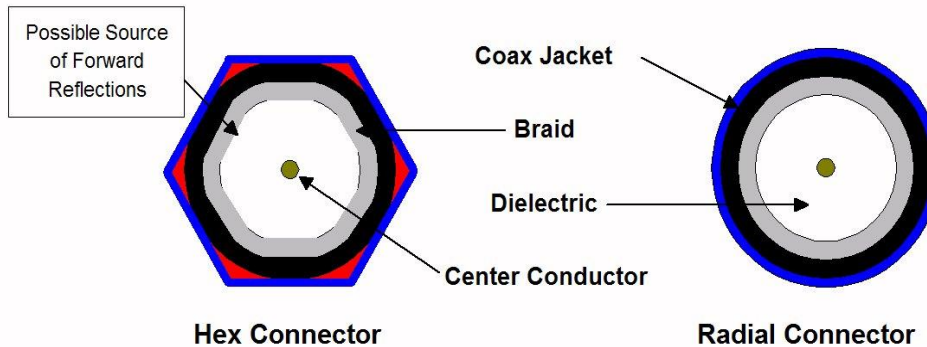
- Patented 360° Radial Compression
- Non-Blind Entry
- Exceeds SCTE Standards for ingress, egress, and water migration
- Greater than 60lbs pull-out strength
- Superior Return Loss Performance
- We also offer our full-line of F-Conn connectors in Universal F, RCA, BNC, and Plenum

➤ **Our HIP products feature:**

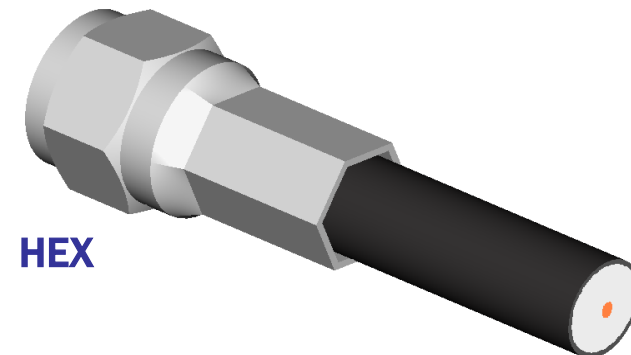
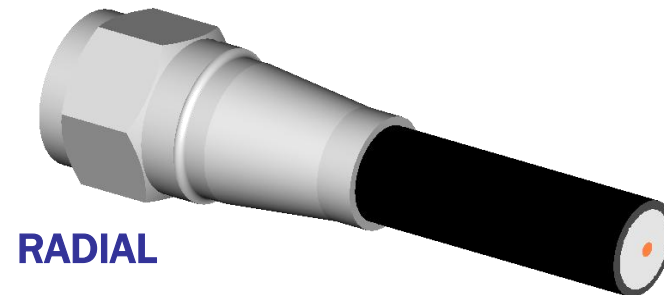
- Our HIP products offer you 1, 2, 3, 4, and 6 port Wall Plates
- They come in Keystone and Decora styles
- Choose from White, Almond, Ivory, or Black
- Color matched to the Leviton Series Wall Plates

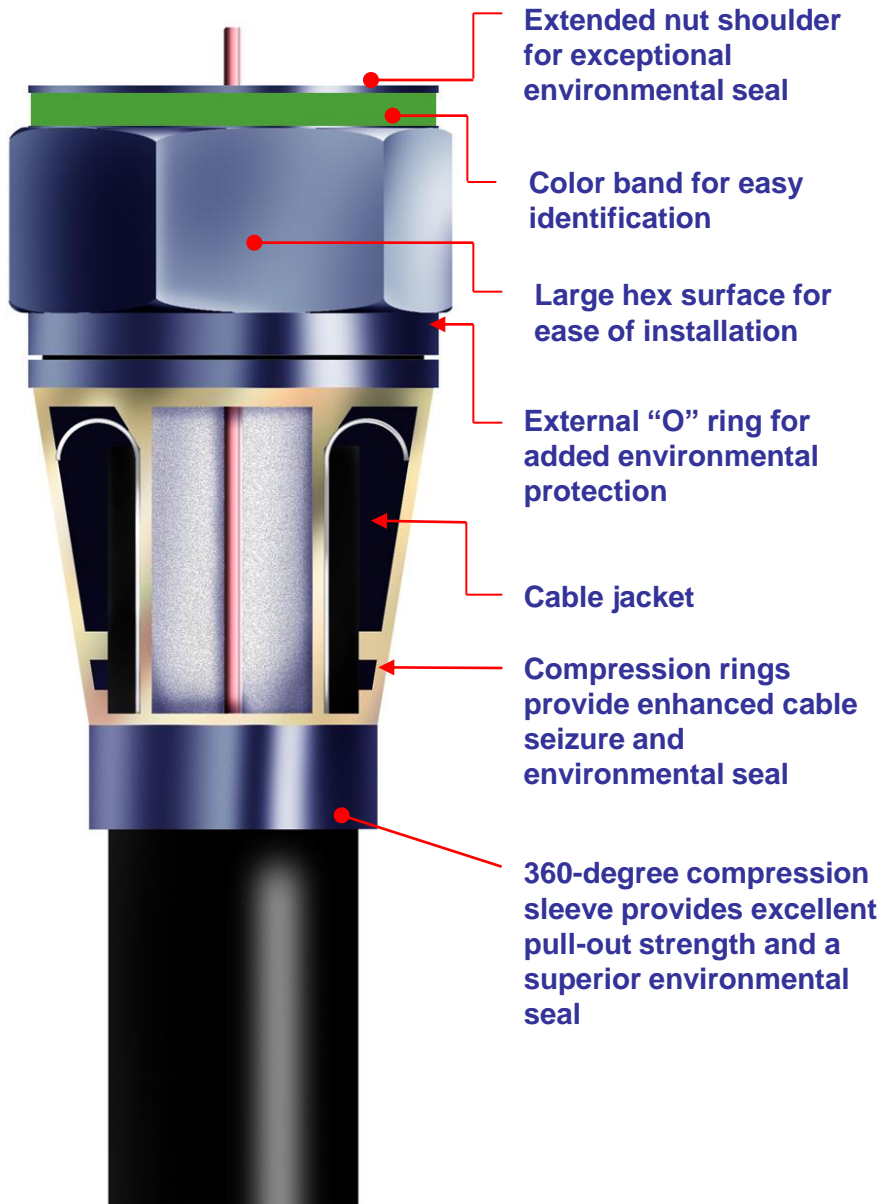
➤ **Our CablePro tools feature:**

- High-quality aircraft grade steel and plastics for durability
- No adjustable parts on tools as they are designed to fit F-conn connectors
- Ergonomically smooth for ease of use
- Utilized in the CATV, security, and home theater markets



- Crimp or hex connection can damage cable, leading to a bad signal
- 360-degree radial compression circles entire cable circumference
- Excellent pullout strength
- Reduces ingress and/or egress
- Prevents moisture migration
- Maintains the integrity of the dielectric, jacket, and wire
- Improves signal impedance providing the best signal possible from a cable connection





- High-performance, 360 sealed compression connector
- Exceeds SCTE and Telcordia requirements & specifications
- Machined brass sealing rings, located in the final taper of the compression, create a permanent water barrier seal at the base of the connector
- An internal "O" ring prevents moisture migration at the base of the nut, creating an environmentally sealed connection
- Large ferrule contact surface ensures a proper RF and digital interface
- Extended nut includes more threads than standard connectors for added environmental protection

Internal depiction of compressed F-Conn  
"DB" Series Connector



**ICM's patented  
non-blind entry on  
F-Conn connectors**



- Connectors available in universal sizes RG59, RG6, RG11, RGB mini coax, and plenum
- F, RCA, BNC, \*Speaker and \*Right Angle (\*FS Series only)
- Feature patented 360-degree compression and non-blind entry for a solid connection and maximum signal quality
- F-Conn connectors and Cable Pro tools are designed to work as a complete system



**Nickel Series**



**Gold Series**



**DB Series**



**Basic Series**



**Right Angle Series**



**Speaker Series**



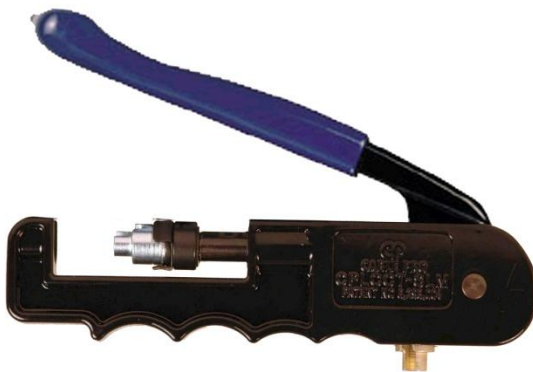
**CPLCRBC Compression Tool**



**PS59/6/RGB Strip Tool**



**PS11 Strip Tool**



**CPLCCT-SLM Compression Tool**



**PSA59/6 Strip Tool**



## PSA59/6 Strip Tool

- Our PSA59/6 offer a variety of benefits:
- Adjustable for RG59 or RG6
- Heavy spring for stripping quad cable
- Built-on Flaring tool for RG6
- Patented positive stop for a perfect 1/4" - 1/4" prep every time
- Steel rollers for ease of use
- Replaceable blade cartridge



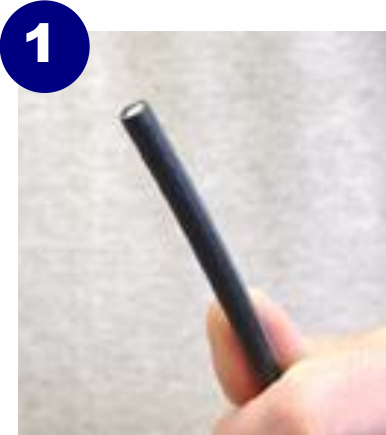
## PS59/6/RGB Strip Tool

- Our PS59/6/RGB offer a variety of benefits:
- For RG59, RG6, and 22-26AWG mini coax
- Lighter spring for delicate mini coax
- Patented positive stop for a perfect 1/4" - 1/4" prep every time
- Steel rollers for ease of use
- Replaceable blade cartridge



## PS11 Strip Tool

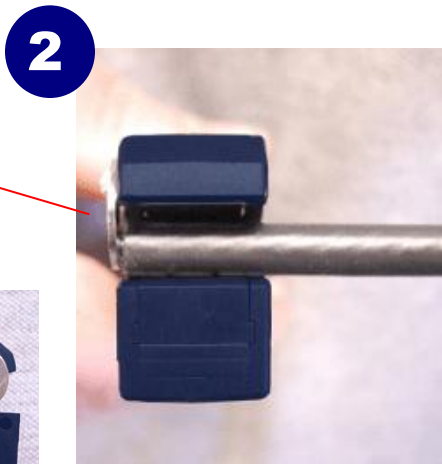
- Our PS11 offer a variety of benefits:
- For RG11 cable
- Heavy spring for cutting
- Patented positive stop for a perfect 1/4" - 1/4" prep every time
- Steel rollers for ease of use
- Replaceable blade cartridge



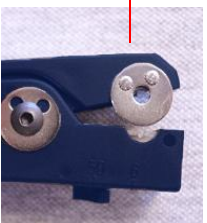
Ensure cable is cut perpendicular to the length of the cable. Use care not to cut at an angle.



To prep cable, complete three rotations forward and three rotations in reverse, being careful not to cut through the braid.



Patented Positive Stop



Squeeze to open prep tool and insert cable until it hits the patented positive stop on the Cable Pro strip tool. Release pressure to close the tool around the cable.

**Cable Pro preparation tools are designed for cutting coaxial cable and calibrated for a 1/4"- 1/4" prep cut every time. F-Conn connectors will not fit properly on other dimensions.**



4

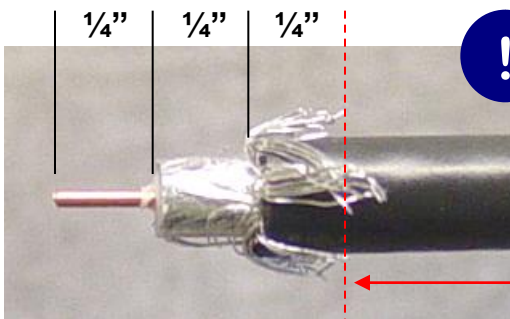


With the tool still in the closed position, pull cable out. This will properly remove the cut materials.

5



Using your thumb or finger tip, carefully pull back the braid from the dielectric leaving the foil in place. When prepping quad shield cable, pull back the first layer of braid, remove the first layer of foil, and pull back the layer of braid closest to the dielectric. Leave the foil around the dielectric in place.



Ensure that any braid extending longer than 1/4" is trimmed to the proper length

Cable, prepped with the proper tool, will have 1/4" center conductor and 1/4" dielectric exposed.



- Creates two 360 ° compression connections (one interior and one exterior) for a permanent, “double bubble” connection
- Patented Cable Pro RBC tool and new line of bubble connectors are designed to work together
- Ideal for security cameras and other exposed wiring installations
- Unique double bubble connection provides superior protection against moisture leakage limiting poor signal quality due to the elements
- CPLCRBC also works with F-Conn Basic F, RCA and BNC Series connectors so installers can reduce the number of tools they carry

- 1.** Prep the cable to the proper 1/4" x 1/4" using the Cable Pro PSA59/6 cable stripper



**2.**

**Line up the connector  
to the cable**



**3.**

**Push the connector onto the  
cable until the dielectric  
is flush with the mandrel**



**4.**

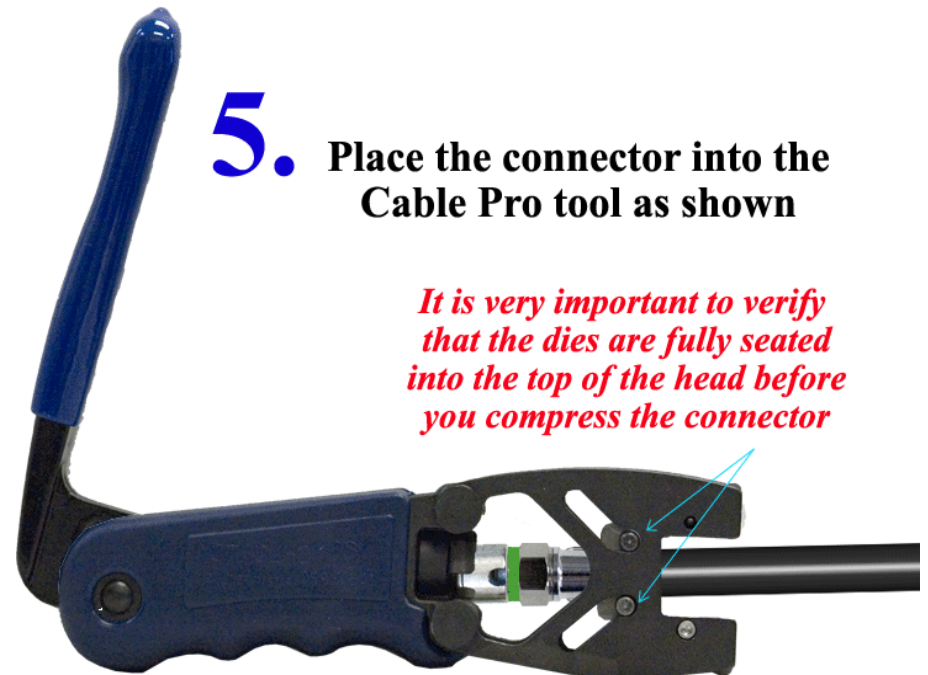
Use the Cable Pro  
CPLCRBC  
along with the silver tip  
LMTIP-S



**5.**

Place the connector into the  
Cable Pro tool as shown

*It is very important to verify  
that the dies are fully seated  
into the top of the head before  
you compress the connector*



## 6. Now compress the connector



7. If the connector feels like it is stuck in the dies just push the cable back into the tool as you are pulling the dies back.

This will help to release the connector from the dies.



**8.**

**Your DBF will look  
like this when it is  
compressed**

